

EDITORIALS

- Clinical Chemistry: A Glimpse into the Future.*
N. Rifai 1
- Putting the "Bio" back into Biomarkers: Orienting Proteomic Discovery toward Biology and away from the Measurement Platform.
L.A. Liotta and E.F. Petricoin 3
- Preanalytical Influences in Clinical Proteomic Studies: Raising Awareness of Fundamental Issues in Sample Banking. R.E. Banks 6
- Fifty-Eight Years of Hemoglobin Analysis.
S.O. Brennan 8

PERSPECTIVES

- Fasting versus Nonfasting Triglycerides and the Prediction of Cardiovascular Risk: Do We Need to Revisit the Oral Triglyceride Tolerance Test?
P.M. Ridker 11
- Fasting versus Nonfasting Triglycerides: Implications for Laboratory Measurements.
G.R. Warnick and K. Nakajima 14

MINI-REVIEW

- Statistical Evaluation of Prognostic versus Diagnostic Models: Beyond the ROC Curve.
N.R. Cook 17

REVIEW

- Inflammation in Atherosclerosis: From Vascular Biology to Biomarker Discovery and Risk Prediction.
R.R.S. Packard and P. Libby 24

OPINION

- A Critical Appraisal of Current Practice in the Detection, Analysis, and Reporting of Cryoglobulins. P. Vermeersch et al. 39

ARTICLES

PROTEOMICS AND PROTEIN MARKERS

- Analytical Validation of Serum Proteomic Profiling for Diagnosis of Prostate Cancer: Sources of Sample Bias. D. McLerran et al. 44

- SELDI-TOF MS Whole Serum Proteomic Profiling with IMAC Surface Does Not Reliably Detect Prostate Cancer. D. McLerran et al. 53

- Reactivity of Urinary Albumin (Microalbumin) Assays with Fragmented or Modified Albumin. D. Sviridov et al. 61

HEMATOLOGY

- Mass Spectrometry: A Tool for Enhanced Detection of Hemoglobin Variants. P. Kleinert et al. 69

- P-Selectin-Coated Microtube for Enrichment of CD34⁺ Hematopoietic Stem and Progenitor Cells from Human Bone Marrow. S.D. Narasipura et al. 77

MOLECULAR DIAGNOSTICS AND GENETICS

- High-Throughput Genotyping of Oncogenic Human Papilloma Viruses with MALDI-TOF Mass Spectrometry. A. Söderlund-Strand et al. 86

- Screening Using Serum Percentage of Carbohydrate-Deficient Transferrin for Congenital Disorders of Glycosylation in Children with Suspected Metabolic Disease. C. Pérez-Cerdá et al. 93

- Inherited Chronic Obstructive Pulmonary Disease: New Selective-Sequencing Workup for α_1 -Antitrypsin Deficiency Identifies 2 Previously Unidentified Null Alleles. J. Prins et al. 101

- Quadruplex Genotyping of *F5*, *F2*, and *MTHFR* Variants in a Single Closed Tube by High-Resolution Amplicon Melting. M.T. Seipp et al. 108

AUTOMATION AND ANALYTICAL TECHNIQUES

- Nanogold Catalysis-Based Immunoresonance-Scattering Spectral Assay for Trace Complement Component 3. Z. Jiang et al. 116

LIPIDS, LIPOPROTEINS, AND CARDIOVASCULAR RISK FACTORS

- Variability of Serial Lipoprotein-Associated Phospholipase A₂ Measurements in Post-Myocardial Infarction Patients: Results from the AIRGENE Study Center Augsburg. N. Khuseyinova et al. 124

continued

ARTICLES, *continued*

Association of Cystic Fibrosis Transmembrane Conductance Regulator (*CFTR*) Mutation/Variant/Haplotype and Tumor Necrosis Factor (*TNF*) Promoter Polymorphism in Hyperlipidemic Pancreatitis. Y.-T. Chang et al. 131

Plasma Concentration of Heat Shock Protein 27 and Risk of Cardiovascular Disease: A Prospective, Nested Case-Control Study. I. Kardys et al. 139

Association of Changes in Oxidative and Proinflammatory States with Changes in Vascular Function after a Lifestyle Modification Trial Among Obese Children. R. Kelishadi et al. 147

Erythrocyte Fatty Acid Composition and the Metabolic Syndrome: A National Heart, Lung, and Blood Institute GOLDN Study. E.K. Kabagambe et al. 154

DRUG MONITORING AND TOXICOLOGY

Arsenic Speciation Analysis in Human Saliva. C. Yuan et al. 163

Excretion of Methamphetamine and Amphetamine in Human Sweat Following Controlled Oral Methamphetamine Administration. A.J. Barnes et al. 172

ENDOCRINOLOGY AND METABOLISM

Plasma Fatty Acid-Binding Protein 4 Increases with Renal Dysfunction in Type 2 Diabetic Patients without Microalbuminuria. A. Cabré et al. 181

Evaluation of a Fully Automated Serum Assay for Total N-Terminal Propeptide of Type I Collagen in Postmenopausal Osteoporosis. P. Garnero et al. 188

BRIEF COMMUNICATIONS

Influence of 5,10-Methylenetetrahydrofolate Reductase Polymorphism on Whole-Blood Folate Concentrations Measured by LC-MS/MS, Microbiologic Assay, and Bio-Rad Radioassay. Z. Fazili et al. 197

Adrenomedullin Blood Concentrations in Infants Subjected to Cardiopulmonary Bypass: Correlation with Monitoring Parameters and Prediction of Poor Neurological Outcome. P. Florio et al. 202

CITATION CLASSICS

Unbound Bilirubin: A Better Predictor of Kernicterus? R. Wennberg 207

CLINICAL CASE STUDY

Persistent Low Concentration of Human Chorionic Gonadotropin in a Nonpregnant Woman. C.R. McCudden et al. 209

COMMENTARIES

C.Y. Muller 213

U.-H. Stenman 213

LETTERS TO THE EDITOR

Use of Single-Value Protein Compensation of the Jaffe Creatinine Assay Contributes to Clinically Significant Inaccuracy in Results. D.M. Parry 215

Stability of Thiopurine Metabolites: A Potential Analytical Bias. P. de Graaf et al. 216

Drug Monitoring and Toxicology (DMT). S. Neale et al. 218

False-Positive Rates for the Qualitative Analysis of Urine Benzodiazepines and Metabolites with the Reformulated Abbott Multigent™ Reagents. G. Lum et al. 220

Are Clinical Laboratories Prepared for Accurate Testing of 25-Hydroxy Vitamin D? R.J. Singh 221

Biological Variation of Myeloperoxidase. M. Dednam et al. 223

Mismeasure of C-Type Natriuretic Peptide. S.J. Nielsen et al. 225

Hexaprimer Amplification Refractory Mutation System PCR for Simultaneous Single-Tube Genotyping of 2 Close Polymorphisms. P. Piccioli et al. 227

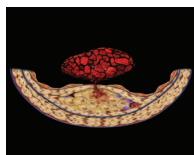
continued

CLINICAL CHEMIST

David Bruns: An Editor for All Reasons. C.A. Burtis 230

ACCENT®—CONTINUING EDUCATION CREDIT FOR READERS OF *CLINICAL CHEMISTRY*

For more information go to www.aacc.org/ccj/accent



ON THE COVER The diagram depicts a partial cross-section of a coronary artery with an advanced atherothrombotic lesion. Inflammatory activation of an atherosclerotic plaque renders the fibrous cap overlaying the lesion thin and rupture-prone. When the fibrous cap ruptures, as illustrated here, tissue factor expressed within the lesion triggers the coagulation cascade with subsequent formation of a thrombus. If sustained and occlusive, this may lead clinically to an acute myocardial infarction. This mechanism of fibrous cap rupture accounts for two-thirds to three-quarters of fatal acute myocardial infarctions, based on pathology studies. Reproduced with permission from Lippincott, Williams and Wilkins. See review by Packard and Libby on page 24.

Color figures for Reviews sponsored by Department of Laboratory Medicine, Children's Hospital Boston.

CALL FOR ART

The all-new design of *Clinical Chemistry* will now feature a different graphic on the cover each issue. Authors or readers with dynamic graphics that would like to be considered for the journal should indicate interest in their cover letter upon manuscript submission or via e-mail at clinchemed@clinchem.aacc.org.